

"S" MOUNTING CODE

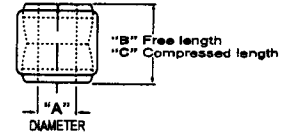
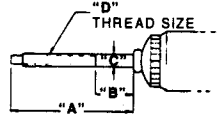
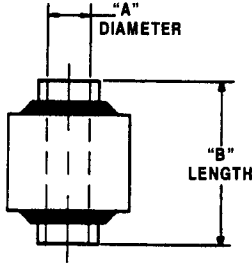
CODE	A	B	C	D
S1	2.37	0.88	3/8	3/8-24
S2	2.18	1.03	3/8	3/8-24
S6	2.59	1.48	7/16	3/8-24
S20	2.68	1.38	3/8	3/8-24
S50	3.25	1.43	1/2	1/2-20
S51	2.79	1.16	5/8	5/8-18

"EB" MOUNTING CODE EYERING AND BUSHING

CODE	A	B	C
EB1	5/8	1.44	1.25
EB2	3/4	1.62	
EB4	11/16	1.72	1.55
EB6	5/8	w/ 1/2"-20 stud	
EB7	5/8	w/ 5/8"-18 stud	

"ES" MOUNTING CODE — EYERING AND BUSHING WITH STEEL SLEEVE

CODE	A	B
ES2	10MM	1.42
ES10	7/16	1.38
ES17	12MM	1.25
ES18	12MM	1.65
ES23	1/2	1.31
ES24	1/2	1.38
ES25	1/2	1.50
ES27	1/2	1.62
ES31	1/2	2.25
ES34	9/16	1.66
ES36	3/4	1.75
ES53	10MM	1.38
ES55	12MM	1.56
ES65	12MM	1.38
ES76	12MM	2.44
ES82	1/2	1.67
ES84	10MM	1.62
ES91	1/2	2.10
ES110	16MM	1.61
ES113	16MM	1.49
ES124	16MM	2.28
ES153	7/16	1.50



NOTES:

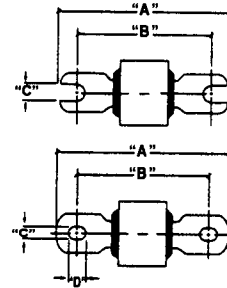
Many shocks come with a sleeve kit to reduce 5/8" rubber bushing eye to 9/16" and 1/2" allowing multiple vehicle application. All mounting code dimensions are approximate, and subject to revision without notice.

97327, 1121, 1122, 1123, 1127, and 99900 are 1-3/8" bore steering stabilizers. 1124, 4407, 5600, 5407 are 1-3/16" bore steering stabilizers. RS1010, RS1018, RS1037 and RS1040 are 1-3/16" bore shock absorbers.

RS4000 shocks are 1-3/8" bore. RS5000 shocks are 1-3/8" bore.
RS5600 shocks are 1-3/16" bore. RS7000 shocks are 1-5/8" bore.
RS1000 shocks are 1-3/8" bore (except as listed above).
RS9000 shocks are 1-3/8" bore.

"BP" MOUNTING CODE — EYERING AND BUSHING WITH BAR PIN

CODE	A	B	C	D
BP4	3.18	2.35	0.33	-
BP5	2.72	2.30	0.35	-
BP7	3.13	2.50	0.35	0.42
BP8	3.50	2.87	0.35	0.42
BP13	3.45	3.00	0.33	-
BP18	3.78	3.14	0.39	-



NOTE: Internal extension bumper may reduce perceived extended length by 1/2".
Extended and collapsed length dimensions shown are for RS5000 shocks, others may vary slightly.

SHOCK ABSORBER SPECIFICATIONS

Model	Extended Length (in.)	Collapsed Length (in.)	Upper Mounting Code	Lower Mounting Code	SPB Pack Part #	Upper Thread Replacement Pack Part #	Lower Thread Replacement Pack Part #	Re-use*
RS5001	21.58	13.22	ES31	ES24	-	980	980	500531
RS5005	29.48	17.22	ES27	EB4	-	980	982	-
RS5006	18.61	11.73	EB1	EB1	1057	978	978	V
RS5007	24.84	14.82	EB1	EB1	1013	978	978	"Re-use"
RS5008	22.58	13.71	EB1	EB1	915, 1057	978	978	V
RS5009	26.80	15.67	S1	ES25	438	980	979	V
RS5010	26.82	15.81	EB1	EB1	915, 920, 1057	978	978	V
RS5012	33.10	18.94	EB1	EB1	915, 934	978	978	V
RS5014	25.49	14.67	S1	S1	438(2)	979	979	V
RS5017	25.79	15.16	S1	ES25	438	979	980	V
RS5019	14.79	9.67	S1	EB1	438, 910	978	978	V
RS5112	26.80	15.96	EB1	EB1	913, 915	978	978	V
RS5113	20.79	12.82	EB1	EB1	916	978	978	V
RS5114	25.13	15.10	EB4	EB4	939	982	982	V
RS5115	21.29	12.82	S1	EB1	438	979	978	V
RS5116	24.57	14.79	EB1	EB1	916	978	978	V
RS5117	19.29	11.92	S1	EB1	438, 910	979	978	V
RS5118	22.82	13.96	EB1	EB1	912, 915	978	978	V
RS5119	18.57	11.70	EB1	EB1	916	978	978	V
RS5120	14.57	9.70	EB1	EB1	829, 915	978	978	V
RS5123	18.57	11.70	EB1	EB1	925, 831	978	978	V
RS5124	24.82	14.81	BP8	EB1	911	980	978	V
RS5125	22.82	13.96	EB1	EB1	920	978	978	V
RS5126	28.82	15.95	EB1	EB1	920	978	978	V
RS5128	21.14	12.77	S1	BP7	438	981	980	V

* Bumper Stop unit dimension shown at Bumper contact.

Rancho only engineers its shock absorbers for the applications listed in this catalog. Misapplication of Rancho shock absorbers will result in reduced handling and braking ability.

SPECIFICATIONS

All listed specifications are for convenience only and are subject to change without notice. Specifications are not intended for design of custom applications.

NOTE: Internal extension bumper may reduce perceived extended length by 1/2".
Extended and collapsed length dimensions shown are for RS5000 shocks, others may vary slightly.

SHOCK ABSORBER SPECIFICATIONS (continued)

RS#	EXTENDED LENGTH	COLLAPSED LENGTH	UPPER BUSHING	LOWER BUSHING	SPRING	UPPER SPRING PLATE	LOWER SPRING PLATE	REAR LOWER CONTROL ARM BUSHING KIT
RS5129	20.61	12.73	BP18	EB1	-	980	978	V
RS5130	22.87	13.80	ES31	ES24	-	980	980	500531
RS5131	21.57	13.20	ES31	ES24	-	980	980	447(S)-7740
RS5132	26.82	15.95	EB1	EB1	911(2)	978	978	V
RS5134	33.10	18.94	EB1	EB1	915,934	978	978	V
RS5135	20.14	11.99	S1	S1	438(2)	979	979	-
RS5136	17.90	11.10	S1	EB1	438,910	979	978	V
RS5137	25.79	15.17	S1	EB1	438,932	979	978	V
RS5138	21.29	12.92	S1	EB1	438,932	979	978	V
RS5139	19.29	11.92	S1	EB1	438,910,932	979	978	V
RS5140	20.79	12.82	EB1	EB1	915,918	978	978	V
RS5141	15.17	10.05	EB1	EB1	-	978	978	-
RS5142	13.17	6.77	S6	BP13	171	981	980	V
RS5143	25.79	15.47	EB2	EB2	119	984	984	-
RS5144	22.89	14.02	EB2	EB2	939	984	984	-
RS5145	13.97	9.26	S1	ES113	148	981	980	-
RS5146	14.14	9.23	S1	BP7	148	981	980	-
RS5147	22.98	14.03	ES18	ES18	-	984	984	V
RS5148	18.67	11.73	EB1	EB1	951	978	978	V
RS5151	19.29	12.07	ES31	ES24	-	980	980	500531
RS5152	18.54	11.70	ES76	ES82	-	980	980	V
RS5153	14.79	9.87	S1	EB1	438,946	981	978	V
RS5154	14.14	9.23	S1	BP7	438	979	980	V
RS5155	18.57	11.70	EB1	EB1	972	978	978	V
RS5156	12.49	8.40	S1	BP8	438	981	980	V
RS5157	21.74	13.24	EB2	S1	967	984	-	V
RS5158	21.48	12.98	S1	EB2	120,148	981	984	-
RS5159	21.63	12.80	S2	S2	989BE	-	-	V
RS5160	17.36	10.60	S1	S1	438(2)	981	981	-
RS5161	25.22	14.88	ES110	ES11	1068	984	-	V
RS5162	23.22	13.88	S51	ES124	1069	-	677(2)	V
RS5163	16.23	10.66	EB2	EB2	119	984	984	-
RS5164	18.73	11.91	EB2	EB2	119	984	984	-
RS5166	22.87	13.85	EB1	EB1	1059	978	978	V
RS5168	14.30	9.40	S1	BP7	148	981	980	V
RS5167	15.79	10.16	S1	EB1	438,910	981	978	V
RS5168	25.79	15.16	S1	ES25	438	981	980	V
RS5169	20.23	12.66	EB2	EB2	119	984	984	V
RS5170	22.82	13.96	EB1	EB1	912,915	978	978	V
RS5171	14.57	9.70	EB1	EB1	829,915	978	978	V
RS5172	22.82	13.95	EB1	EB1	920	978	978	V
RS5175	20.79	12.82	EB1	EB1	916	978	978	V
RS5176	17.00	11.10	S1	EB1	438,910	979	978	V
RS5179	22.82	13.94	S1	EB1	438,920	979	978	V
RS5180	21.98	13.53	EB2	EB2	119	984	984	-
RS5181	22.82	13.95	BP13	EB1	912,915	980	978	V
RS5182	18.70	11.27	S1	S1	438(2)	981	981	-
RS5183	17.32	10.89	S1	EB2	120,438	979	984	-
RS5184	20.87	12.98	EB2	EB2	119	984	984	-
RS5185	26.82	15.95	BP8	EB1	941,972	980	978	V
RS5186	22.12	13.24	S20	EB1	438	981	978	-
RS5187	21.31	12.92	S1	EB2	120,148	979	984	-
RS5188	12.49	8.40	S1	EB1	438,910	981	978	V
RS5190	26.08	15.51	BP8	ES34	-	980	NR	V
RS5191	19.45	12.22	EB1	ES113	-	978	984	V
RS5193	23.48	14.21	BP8	ES34	-	980	NR	V
RS5194	23.74	14.27	EB1	EB1	1013	978	978	V
RS5195	14.32	9.41	S50	EB2	120,1029,1036	-	-	-
RS5197	22.26	14.37	S50	EB2	120,1029,1036	-	-	-
RS5198	25.23	15.21	EB2	EB2	1036,119	-	-	-
RS5199	13.17	6.77	S6	BP13	171	-	-	-
RS5201	18.17	11.42	S6	S6	840	981	981	-
RS5202	24.21	15.16	EB2	EB2	575	984	984	-
RS5203	19.72	12.33	EB1	ES113	-	978	984	V
RS5204	18.90	11.40	S1	S1	438	981	981	-
RS5205	22.83	14.17	EB1	EB1	-	978	978	-
RS5206	22.24	13.58	S1	EB2	120,438	979	984	-
RS5207	23.93	14.42	S50	S50	1029	-	-	-
RS5208	23.10	13.84	S50	EB2	920,1029	-	-	-
RS5213	18.92	11.69	S20	ES113	438	-	-	-
RS5214	14.99	9.70	S20	ES17	846	-	-	-
RS5215	20.27	12.70	ES34	EB2	120	-	-	-
RS5221	24.18	14.37	S50	EB2	120,1029,1036	-	-	-
RS5222	13.67	8.99	S20	BP4	438	NR	-	-
RS5223	13.62	8.99	S20	ES65	846	981	980	"Re-use"
RS5225	27.37	16.24	EB2	EB2	119,1036	-	-	-
RS5226	20.31	12.74	EB2	EB2	119	984	984	-
RS5227	27.96	16.59	BP7	ES34	-	980	980	"Re-use"
RS5229	18.73	13.62	S1	BP7	941	-	-	-
RS5230	22.57	14.57	EB2	EB2	1020	-	-	-
RS5231	26.57	16.57	EB2	EB2	1020	-	-	-

* Purchase 1 upper Bushing Kit for every 2 upper shock mounts
Re-use Standard P-Pack sleeves or the sleeve from original rubber mount.

** Purchase 1 lower Bushing Kit for every 2 lower shock mounts

Rancho only engineers its shock absorbers for the applications listed in this catalog.
Misapplication of Rancho shock absorbers will result in reduced handling and braking ability

NOTE: Internal extension bumper may reduce perceived extended length by 1/2".
 Extended and collapsed length dimensions shown are for RS5000 shocks, others may vary slightly.

SHOCK ABSORBER SPECIFICATIONS (continued)

R50000	EXTENDED LENGTH	COLLAPSED LENGTH	MOUNTING UPPER	MOUNTING LOWER	STD. P-PACK <small>Incl. w/ sleeve</small>	FOR URETHANE REPLACEMENT (Urethane Kit)		
						UPPER	LOWER	P-PACK
RS5232	32.98	19.32	EB2	EB2	1020	Urethane Incl. Replacement w/		
RS5233	14.79	10.08	S50	EB1	840			
RS5234	27.80	16.12	S60	EB1	840			
RS5235	10.36	15.49	S50	BP7	1073			
RS5236	14.2	24.03	S50	ES65	1073			
RS5237	18.58	13.96	S20	EB4	840			
RS5238	29.23	17.87	S50	EB1	840			
RS5239	20.46	12.49	S20	BP7	840			
RS5240	19.56	12.19	BP18	EB1	920			
RS5241	21.41	13.44	BP18	EB1	920			
RS5243	17.87	29.23	S50	S1	1223,1073			
RS5246	14.25	23.38	EB1	EB1	915,1013			
RS5247	14.2	24.03	S50	ES55	1073			
RS5248	15.12	24.63	EB2	EB2	-			
RS5601	20.22	12.38	EB1	EB1	-	978	978	V
RS5602	13.69	8.86	S1	BP5	438	981	980	V
RS5604	19.19	11.61	EB1	S1	148	981	980	-
RS5605	13.69	8.71	S1	EB1	438,952	981	980	V
RS5606	14.44	9.24	S1	EB1	438,829	981	980	V
RS5607	20.17	11.81	S1	S1	438	981	981	-
RS5609	14.39	9.16	S20	BP4	438	981	980	V
RS5761	18.13	13.45	S50	ES153	1029	-	980	*Re-use*

R50000	EXTENDED LENGTH	COLLAPSED LENGTH	MOUNTING UPPER	MOUNTING LOWER	P-PACK	FOR URETHANE REPLACEMENT (Urethane Kit)		
						UPPER	LOWER	P-PACK
RS9001	21.43	13.20	ES31	ES24	976	978	978	976
RS9005	29.30	17.22	ES27	EB4	934	978	992	934
RS9006	18.31	11.68	EB1	EB1	915,927,1057	978	978	915,917,920
RS9008	22.38	13.68	EB1	EB1	915,1057	978	978	915,917,920
RS9009	26.78	15.67	S1	ES25	910,974	979	978	974,910
RS9010	26.69	15.84	EB1	EB1	920,1057	978	978	917,920
RS9012	32.91	18.94	EB1	EB1	915,934	978	978	917,920
RS9014	25.21	14.67	S1	S1	974 (2)	979	979	974(2)
RS9017	25.79	15.13	S1	ES25	829,974	979	978	974,929
RS9019	14.80	9.67	S1	EB1	910,974,1013	978	978	974,910
RS9112	26.65	15.94	EB1	EB1	913,915,1013	978	978	913,545,1013
RS9113	20.65	12.82	EB1	EB1	916	978	978	916
RS9114	24.92	15.10	EB4	EB4	939	992	992	936
RS9115	21.24	12.92	S1	EB1	910,974	979	978	974,910
RS9116	24.40	14.79	EB1	EB1	916,1013	978	978	916,1013
RS9117	19.30	11.92	S1	EB1	910,974	979	978	974,910
RS9118	22.80	13.94	EB1	EB1	912,915,1013	978	978	915,912,1013
RS9119	18.39	11.68	EB1	EB1	916	978	978	916
RS9120	14.38	9.70	EB1	EB1	915,916	978	978	916(2)
RS9123	18.39	11.68	EB1	EB1	1084	978	978	930,931
RS9124	24.40	14.79	BP8	EB1	911	978	978	911
RS9125	22.83	13.97	EB1	EB1	920	978	978	920
RS9126	26.82	15.97	EB1	EB1	920	978	978	920
RS9128	21.09	12.77	S1	BP7	840CAN	979	978	974
RS9129	20.49	12.73	BP18	EB1	-	978	978	-
RS9136	17.65	11.10	S1	EB1	910,974,1013	979	978	910,974,1013
RS9138	21.20	12.88	S1	EB1	910,932,974	979	979	974,910,932
RS9143	25.87	15.47	EB2	EB2	-	984	984	-
RS9144	22.55	14.00	EB2	EB2	-	984	984	-
RS9145	13.99	9.31	S1	ES113	974,1016	979	978	910,974
RS9151	19.17	12.07	ES31	ES24	976	978	978	976
RS9152	18.39	11.68	ES76	ES82	975	978	978	975
RS9155	18.39	11.68	EB1	EB1	972	978	978	972
RS9156	12.24	8.40	S1	BP8	974	976	978	974
RS9157	21.91	13.34	EB2	S1	967,1029	984	-	967,970BE
RS9158	21.35	13.03	S1	EB2	974	979	984	974
RS9159	21.66	12.79	S2	S2	969BE	-	-	969BE
RS9165	22.87	13.85	EB1	EB1	1059	978	-	937
RS9166	14.34	9.54	S1	BP7	1035	981	-	1035
RS9168	25.90	15.24	S1	ES25	925,974	979	978	974,930
RS9159	21.66	12.79	S2	S2	969BE	-	-	-
RS9165	22.87	13.85	EB1	EB1	1059	-	-	-
RS9166	14.34	9.54	S1	BP7	1035	-	-	-
RS9168	25.90	15.24	S1	ES25	925,974	-	-	-
RS9179	22.95	13.95	S1	EB1	920,1035	979	978	1035
RS9180	21.76	13.53	EB2	EB2	-	984	984	-
RS9185	26.82	15.97	BP8	EB1	941,972	976	976	968,972
RS9186	21.02	12.79	S20	EB1	974	979	976	974
RS9187	21.17	12.94	S1	EB2	974	979	984	974
RS9188	12.24	8.40	S1	EB1	974	-	910	-

* Purchase 1 upper Bushing Kit for every 2 upper shock mounts
 Re-use Standard P-Pack sleeves or the sleeve from original rubber mount.

** Purchase 1 lower Bushing Kit for every 2 lower shock mounts v

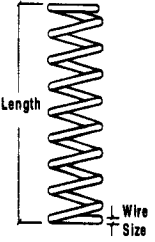
Rancho only engineers its shock absorbers for the applications listed in this catalog.
 Misapplication of Rancho shock absorbers will result in reduced handling and braking ability.

ADD-A-LEAF SPECIFICATIONS

ADD-A-LEAF KIT NUMBER	LENGTH END TO END	WIDTH	LEAF THICKNESS	ARCH	SINGLE LEAF	LEAF STYLE
RS50012	44.00	2.50	.360	4.50	502	FLAT
RS50112	50.50	3.00	.360	5.00	503	FLAT
RS50212	44.00	2.50	.360	4.50	502	FLAT
RS60012	27.50	2.30	.630	1.90	504	TAPERED
RS60013	45.65	2.50	.320	8.65	319	FLAT
RS60112	22.00	2.00	.400	2.08	505	TAPERED
RS60312	25.75	3.00	.630	1.50	507	TAPERED
RS60412	50.01	3.00	.400	6.37	508	FLAT
RS60512	32.50	2.00	.400	3.62	509	FLAT
RS60612	22.04	2.36	.400	2.00	510	TAPERED
RS60613	44.76	2.50	.260	6.75	313	FLAT
RS60614	50.00	2.50	.260	4.75	327	FLAT
RS60622	45.75	2.36	.260	7.00	518	FLAT
RS60622	36.00	2.36	.260	4.75	519	FLAT
RS60624	46.00	3.00	.320	7.50	314	FLAT
RS60624	49.75	3.00	.320	8.00	506	FLAT
RS60632	42.75	2.50	.260	6.25	316	FLAT
RS60633	33.50	2.50	.390	3.62	321	FLAT
RS60633	42.70	2.50	.260	4.99	320	FLAT
RS60634	55.00	2.50	.390	7.85	317	FLAT
RS60635	42.75	2.36	.260	6.25	324	FLAT
RS60636	24.25	2.38	.250	2.38	325	FLAT
RS60637	36.00	2.50	.262	4.75	328	FLAT
RS60639	43.00	3.00	.354	7.61	329	FLAT
RS60712	22.44	1.75	.440	2.25	511	TAPERED
RS60812	46.75	2.50	.310	7.26	512	FLAT
RS60913	48.75	2.50	.260	5.50	513	FLAT
RS70062	48.00	2.50	.320	8.65	318	FLAT

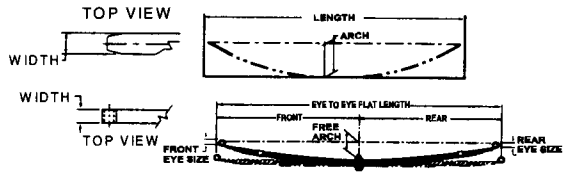
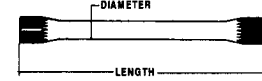
COIL SPRING SPECIFICATIONS

COIL SPECIFICATION	RAIL LBS PER IN	FREE LENGTH	WIRE SIZE	COIL KEYS TAGS
RS311	180	16.83	0.560	6424,6449
RS312	222	14.85	0.578	6425,6448
RS601	545	18.68	0.781	80114
RS602	485	17.45	0.750	6402,6403
RS607	545	19.68	0.781	6400,6404, 6405
RS608	240	18.00	0.625	6423
RS609	460	19.18	0.775	6406,6422
RS611	459	15.32	0.718	6408
RS614	1050	14.25	0.843	6500
RS620	460	18.18	0.775	6420,6430, 6436
RS621	804	12.42	0.718	6455,6460
RS622	1190	13.50	0.905	6458
RS623	680	12.83	0.625	6457
RS630	435	15.89	0.688	6421,6431, 6432,6433
RS631	520	16.52	0.718	6434,6435
RS632	460	15.80	0.718	6439,6441
RS633	1190	14.20	0.905	6462
RS634	1038	12.89	0.843	6465
RS635	1038	10.39	0.812	6463
RS636	240	18.44	0.625	6413
RS637	200	14.98	0.562	6414
RS650	227	13.35	0.578	6490



TORSION BAR SPECIFICATIONS

TORSION BAR	DIAMETER	LENGTH	KIT
1426	26MM	36.50	616
1438	26MM	32.25	612
1439	26MM	32.25	612
1630	26MM	38.60	617
1631	26MM	38.60	617
1632	24MM	41.93	619
1633	24MM	41.93	619
1634	34MM	54.02	640



SPRING SPECIFICATIONS

LEAF SPRING NUMBER	RATE LBS PER IN	EYE TO EYE FLAT LENGTH	ARCH (IN)	EYE SIZE FRONT	EYE SIZE REAR	WIDTH	THICKNESS IN CENTER	OFF SET (UNITS BOLD) FRONT FLARE	NUMBER OF LEAFS
RS305	300	45.12	4.05	1.19	1.19	2.36	0.98	-	3
RS305L	300	45.12	4.70	1.19	1.19	2.36	0.98	-	3
RS306	160	47.82	7.70	1.50	1.50	2.36	1.49	20.47/27.35	5
RS820	509	43.86	6.97	1.17	1.17	2.00	1.94	-	6
RS825	448	56.92	7.11	1.17	1.17	2.00	2.41	-	6
RS16243	711	36.70	3.68	0.75	0.88	1.75	1.44	-	4
RS24043	604	44.64	5.75	1.25	1.50	2.50	1.44	-	4
RS27743	492	50.39	6.75	1.00	1.00	1.75	1.70	24.25/26.14	4
RS40054S	672	46.90	3.50	1.13	1.50	2.50	1.92	-	5
RS41054S	720	43.57	2.86	1.13	1.50	2.50	2.01	-	5
RS42054S	605	48.04	3.19	1.02	1.02	2.50	1.92	-	5
RS42055	428	48.08	1.75	1.00	1.00	2.50	1.70	-	5
RS42056	428	48.04	2.85	1.03	1.03	2.50	1.70	-	5
RS43033	391	44.13	5.45	1.38	1.38	2.75	1.66	20.31/23.82	6
RS43133	290	45.47	8.36	1.38	1.38	2.75	1.50	20.65/24.82	6
RS44010	353	36.24	3.17	0.87	0.87	1.75	1.38	-	5
RS44020	349	36.50	4.37	0.87	0.87	1.50	1.38	-	5
RS44044	300	47.00	6.58	1.50	1.50	2.50	1.66	22.50/24.50	6
RS44046	256	36.80	2.75	1.50	1.50	2.00	1.05	-	4
RS44047	174	45.20	6.75	1.25	1.50	2.00	0.79	-	3
RS44050	174	46.00	7.62	1.25	1.50	2.00	0.79	-	4
RS44051	644	52.50	6.00	2.00	2.00	3.00	2.00	24.00/28.50	5
RS44053	834	52.50	6.25	2.00	2.00	3.00	2.24	24.00/28.50	5
RS44061	335	40.00	3.59	0.88	0.88	1.75	1.66	-	6
RS44062	314	40.50	5.10	0.88	0.88	1.50	1.66	-	6
RS44082	330	44.26	5.67	1.50	1.00	2.50	1.93	-	7
RS44091	300	44.88	4.25	1.50	1.00	2.00	1.45	-	5
RS44092	325	44.88	5.50	1.50	1.00	2.00	1.45	-	5
RS44110	330	42.00	4.64	0.56	0.87	1.75	1.54	-	5
RS44120	316	42.50	5.63	0.56	0.87	1.75	1.54	-	5
RS44121	196	64.00	2.68	1.50	1.50	2.50	0.90	-	2
RS44146	156	39.36	4.05	1.50	1.50	2.00	1.18	-	4
RS44147	200	45.60	6.65	1.25	1.50	2.50	1.05	-	4
RS44148	186	51.50	5.87	1.50	1.50	2.50	1.39	23.00/28.50	5
RS44150	200	45.90	7.25	1.25	1.50	2.50	1.05	-	4
RS44161	280	46.10	4.15	0.88	0.88	1.75	1.84	-	6
RS44162	287	46.70	6.15	0.88	0.88	1.75	1.84	-	6
RS44182	308	45.68	5.67	1.50	1.00	2.50	1.66	-	6
RS44191	290	45.40	4.35	1.50	1.00	2.50	1.38	-	5
RS44192	290	45.40	5.60	1.50	1.00	2.50	1.38	-	5
RS46053S	590	54.09	4.92	1.61	1.38	3.00	1.45	26.81/27.28	3
RS86201	340	46.90	3.75	1.50	1.13	2.50	1.04	-	3
RS86202	450	46.90	3.00	1.50	1.13	2.50	1.69	-	5
RS86206	520	46.90	3.72	1.50	1.13	2.50	1.80	-	5
RS86209	287	52.00	7.75	1.50	1.50	2.50	2.29	-	6
RS86210	348	46.90	3.47	1.13	1.50	2.50	2.43	-	9
RS86211	230	52.00	9.17	1.50	1.50	2.50	1.75	-	6

Rancho only engineers its shock absorbers for the applications listed in this catalog. Misapplication of Rancho shock absorbers will result in reduced handling and braking ability.

SPECIFICATIONS

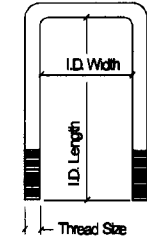
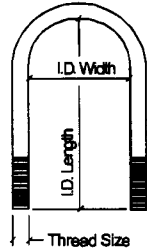
All listed specifications are for convenience only and are subject to change without notice. Specifications are not intended for design of custom applications.

STEEL SLEEVE SPECIFICATIONS

PART NUMBER	O.D.	DIMENSION I.D.	LENGTH
RS420	.75	.56	3.65
RS421	.63	.44	3.70
RS422	.75	.55	3.51
RS423	.63	.44	3.51
RS424	.75	.56	3.00
RS425	.56	.44	1.80
RS426	.63	.44	2.20
RS427	.63	.50	2.80
RS428	.75	.56	2.75
RS429	.75	.56	2.95
RS430	.75	.63	3.37
RS431	.75	.56	3.40
RS439	.75	.56	1.62
RS440	.81	.50	1.25
RS441	.81	.50	0.31
RS445	.56	.50	1.25
RS447	.63	.50	2.00
RS448	.75	.50	1.40
RS450	.69	.50	2.64
RS452	1.0	.75	1.75
RS453	.81	.50	1.75
RS457	.75	.56	2.60
RS458	.88	.63	0.72
RS460	.88	.63	0.63
RS461	.75	.63	1.90
RS463	.87	.63	2.15
RS464	.63	.44	5.02
RS468	.75	.50	2.55
RS471	.75	.50	3.05
RS473	.75	.50	2.45
RS474	.69	.50	2.75
RS479	.75	.56	1.80
RS483	.75	.56	2.04
RS485	.75	.50	1.60
RS411001	.63	.56	1.60
RS411002	.75	.50	1.63
RS411012	.63	.50	1.31
RS403630	.63	.50	1.62
RS403887	.63	.50	2.25
RS403242	.63	10MM	1.33
RS603501	.50	.38	0.15
RS603502	.63	.38	1.35
RS603503	.75	.50	1.68
RS603504	.75	.50	3.70
RS603514	.75	12MM	2.45
RS603536	.75	.63	1.75
RS603537	.63	.44	2.12
RS603538	.63	.44	2.61
RS603539	.63	.44	3.11
RS603540	.63	.50	1.61
RS603544	.63	.44	4.06
RS603545	.63	.38	0.50

U-BOLT SPECIFICATIONS

PART NUMBER	THREAD SIZE	ROUND OR SQUARE	I.D. WIDTH	I.D. LENGTH
RS17410	1/2	ROUND	2.31	6.50
RS17413	1/2	ROUND	2.55	6.50
RS17415	1/2	ROUND	2.88	6.75
RS17454	1/2	ROUND	2.55	6.25
RS17455	1/2	ROUND	3.13	6.55
RS17463	1/2	ROUND	2.85	10.00
RS17414	1/2	ROUND	3.25	6.75
RS17404	1/2	ROUND	3.25	7.63
RS17406	1/2	ROUND	3.50	8.00
RS17409	1/2	ROUND	3.63	8.50
RS17412	1/2	ROUND	3.25	9.75
RS17408	9/16	ROUND	2.56	6.38
RS17469	9/16	ROUND	3.25	6.80
RS17493	9/16	ROUND	2.81	7.50
RS17494	9/16	ROUND	3.00	7.50
RS17470	9/16	ROUND	3.25	7.75
RS17492	9/16	ROUND	3.50	8.00
RS17498	9/16	ROUND	3.75	8.00
RS17490	9/16	ROUND	2.81	10.13
RS17491	9/16	ROUND	3.03	11.25
RS17483	9/16	ROUND	3.25	10.75
RS17482	9/16	ROUND	3.22	13.12
RS17488	9/16	SQUARE	2.56	8.50
RS17472	5/8	ROUND	3.00	7.38
RS17476	5/8	ROUND	2.81	7.60
RS17477	5/8	ROUND	3.00	7.80
RS17436	5/8	ROUND	3.25	8.75
RS17474	5/8	ROUND	3.65	9.00
RS17433	5/8	ROUND	2.81	9.25
RS17431	5/8	ROUND	3.00	9.25
RS17437	5/8	ROUND	4.00	9.25
RS17475	5/8	ROUND	3.65	10.12
RS17497	5/8	ROUND	2.98	10.62
RS17496	5/8	ROUND	3.38	11.00
RS17432	5/8	ROUND	3.63	11.50
RS17484	5/8	ROUND	2.98	12.12
RS17485	5/8	ROUND	3.30	12.62
RS17402	5/8	ROUND	3.63	13.00
RS17487	5/8	SQUARE	2.56	9.00
RS17407	9/16	SQUARE	2.43	6.63
RS17481	9/16	SQUARE	3.13	8.00
RS17489	9/16	SQUARE	2.56	13.00
RS17486	9/16	SQUARE	2.56	14.50
RS17479	9/16	SQUARE	2.56	16.00
RS17460	9/16	SQUARE	2.56	7.50
RS17499	9/16	STUD	-	4.59
RS17495	9/16	SQUARE	2.37	11.00

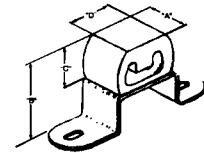


Caution: This U-bolt listing is intended for direct replacement of existing catalog applications only; NOT INTENDED FOR CUSTOM APPLICATIONS.

Notes: For individual U-bolts, delete the 1 at the front of the part num

BUMP STOP SPECIFICATIONS

BUMP STOP	A	B	C	D
RS8203	2.85"	3.50"	2.00"	1.75"
RS8204	2.85"	4.50"	2.00"	1.75"
RS8205	2.85"	5.50"	2.00"	1.75"
RS8202	4.50"	3.00"	3.00"	2.50"
RS8206	2.85"	2.00"	2.00"	1.75"
RS8209	1.95"	2.45"	2.20"	1.60"
RS8211	2.30"	2.25"	2.00"	1.95"
RS8213	2.85"	5.00"	2.00"	1.75"
RS8216	2.85"	5.00"	2.00"	1.75"



FRACTION TO DECIMALS					
1/8"	=	.125/.13	11/16"	=	.688/.69
1/4"	=	.250/.25	23/32"	=	.719/.72
3/8"	=	.375/.38	3/4"	=	.750/.75
7/16"	=	.438/.44	13/16"	=	.813/.81
1/2"	=	.500/.50	7/8"	=	.875/.88
9/16"	=	.563/.56	15/16"	=	.938/.94
5/8"	=	.625/.63	1"	=	1.000/1.00

Rancho only engineers its shock absorbers for the applications listed in this catalog. Misapplication of Rancho shock absorbers will result in reduced handling and braking ability.